

The
CLIFTON
By the Clifton Community Council, since 1987

Spring  2026
cliftonlouky.org

quarterly

32nd Frankfort Avenue Easter Parade **Saturday, April 4, 2026**

Louisville's only Easter Parade is hopping back to The Avenue on Saturday, April 4, bringing candy, color, and community fun to the historic Crescent Hill and Clifton neighborhoods. This free, family-friendly tradition invites all ages to dust off their bunny ears, fluff those tails, and celebrate spring in one of the city's most festive ways.



This year's Parade Grand Marshal, Chris Hartman, Executive Director of the Fairness Campaign, will kick off the celebration at approximately 11:30 am. in front of St. Mark's Episcopal Church, 2822 Frankfort Ave. From there, hundreds of participants will parade down Frankfort Ave, wrapping up at the corner of Frankfort and Pope.

Known as Louisville's most unique and joy-filled Easter celebration, the parade features candy-throwing fun, homemade floats, fencers, a magician, dance groups, antique cars and trucks, and a lively mix of local organizations. Participants include the Classic Volkswagen Club of Louisville, Mexico Lindo, the Louisville League of Mascots, Louisville Skaters United, River City Turners Gymnastics, the Shriners, and more — all led by the most egg-citing VIP of the day: the Easter Bunny.

This isn't just a parade to watch — it's a parade to be a part of. Families, friends, and four-legged companions are encouraged to dress up, decorate wagons, bicycles, and vehicles, and show off their springtime spirit. Judges will award coveted "Good Ears" prizes to the most creative and festive entries, so let your imagination run wild!

For more than 30 years, the Frankfort Avenue Easter Parade has been a cherished tradition celebrating the vibrant spirit of this community. The event is made possible thanks to the continued support of the Frankfort Avenue Business Association, Clifton Community Council, Crescent Hill Community Council, and Metro Council District 9.

Hop to it — and we'll see you on The Avenue!

Follow us on socials! www.facebook.com/TheAveEaster / www.instagram.com/theaveeaster

For more information or to join in the Parade, please contact: Parade Coordinator, Scott Endres, scottendres@yahoo.com. Sponsorships, Tori Crisp, frankfort.avenue.parade@gmail.com. Marketing, Lizi Hagan, frankfort.avenue.parade@gmail.com.

Clifton Community Council Quarterly Public Meeting

Monday, March 16, 2026 - 6:00 PM, 150 State St., United Crescent Hill Ministries Community Room

There will be two speakers at this meeting. Sarah Wolff, Director of Outreach & Advocacy, Olmsted Parks Conservancy will provide an update on the Bingham Park Master Plan Improvement Project. Ellie Davenport, Community Engagement Manager, Louisville Grows, will provide information on their spring tree planting event and how residents and businesses can adopt a tree for their property.

All meetings are open to the public, and we enthusiastically invite everyone to attend.

Clifton Community Council Meetings

Clifton Community Council Board of Directors meetings are held on Zoom at 6:00 PM on the 2nd Tuesday of each month. Land Use and Preservation Committee meetings are held on Zoom at 6:00 PM on the 1st Tuesday of each month. Neighborhood Pedestrian and Bike Access meetings are by Zoom at 7:00 PM on the third Wednesday of ODD numbered months. If you are interested in joining any of the meetings, please contact Mike O'Leary at michael.oleary@twc.com or (502) 744-3144.



D9 Neighborhood Report

By Metro District 9 Councilman Andrew Owen

I certainly appreciate the frustration that has been shared with my office by our neighbors about the recent snowstorm and the lack of salt treatment and plowing on side streets, sidewalks, and alleys. I thought I would take this opportunity to share some facts and a bit of perspective.

First, seasonal sidewalk maintenance, which includes snow and ice removal, is the responsibility of the adjacent property owner, not Metro Government. That includes homeowners in residential areas and business owners along commercial corridors. In addition, if there is a slip and fall incident on the sidewalk in front of your house or business, the potential liability could be borne by the responsible party.

Second, if you are lucky enough to live on or have a business located on a snow emergency route or on a street that has been prioritized for one reason or another to be included on the Metro Snow Map, when the plow comes through to clear the roadways, the adjacent homeowner or business owner is responsible for clearing the "wall" of plowed snow that gets pushed in front of the driveways and curb cuts. There is simply no way around it. Also, if you park on one of the streets that is scheduled to be plowed, it is your responsibility to either move your car to a safer location or be prepared to dig your car out from under the snow that is inevitably plowed into it. Again, not ideal, but there is no way around it.

Third, I want to reiterate that Metro government is simply not currently built to treat and/or plow every street in our county, much less all of the alleys behind houses and businesses in the old urban services district. The responsibility to clear the streets and alleys and the potential liability ultimately falls on Metro government, but we simply do not currently have the resources or personnel in place to take care of it. We also understand that not clearing the side streets and alleys will likely have a significant negative impact on Metro Government's ability to collect garbage and recycling but again, we simply don't have the resources within Metro Public Works to do it all.

To be fair, this has always been the case. We have never allocated adequate resources in the annual Metro budget to prepare for these types of winter events. And other than a few memorable years, 1978, 1994, a couple of years in the early 2000's, etc., it has never been a problem. The truth is, never in our modern history have we had large snow events like we have in the last two years followed by weeks of below freezing temperatures.

With that said, as a community, we are going to have to make the determination if the last two winters are the new normal, and, if we anticipate we are going to regularly have winter events similar to the upper Midwest, or whether these events are going to remain sporadic and rare. At this point, while I am prepared to recommend additional money is allocated in the next Metro budget to pay for supplemental contractor assistance, I am not prepared to support purchasing millions of dollars of equipment and adding personnel to the snow team that may never be used. If we have learned anything from climate change, we have learned to expect extreme weather, yes, but also to expect the unexpected. That could just as easily show up as months of Arctic temperatures as nary a flake shall fall.

I'm sure that it will be an ongoing conversation at Metro Council and in the community between now and May, when we debate and pass the FY 2027 budget.

Metro Council offices worked with the administration and revisited our snow maps and routes after last winter and made some significant improvements over the year before. Thanks for reaching out.

*For more information, please call 502-574-1109 or visit www.louisvilleky.gov/district9
Councilman Andrew Owen, Louisville Metro Council District 9, andrew.owen@louisvilleky.gov
Legislative Assistant Jasmine Presley, 502-574-3908, jasmine.presley@louisvilleky.gov
Administrative Assistant Regina Garr, 502-574-1297, regina.garr@louisvilleky.gov
District 9 eNews: louisvilleky.gov/government/metro-council-district-9/district-9-eneews*

Monthly In-Person Sessions, Plus Election News

The **League of Women Voters of Louisville** has been actively involved in many issues over the years. On the 3rd Monday of each month from 5:30-7:30 PM, the League presents a current topic, open to the public and free. Audience members can ask clarifying questions of the speakers and gain new insights. The League is located at 115 S. Ewing at Lang House. There is limited free parking behind Lang House and nearby on-street parking.

Our upcoming **Democracy in Action** programs for 2026 so far are:

March 16 - Information about the primary election

April 8 - Education forum with JCPS Superintendent, Dr. Brian Yearwood speaking

April 20 - Housing Issues

Each **Democracy in Action** program is re-broadcast over Forward Radio, WFMP 106.5 FM, as well as live streamed at www.forwardradio.org/ the following week. After that, it will be available as a downloadable podcast by going to the same website, www.forwardradio.org, clicking on the **PROGRAMS** tab and selecting **ELECTION CONNECTION**. The program will appear on the Election Connection Playlist.

Our other work in early 2026 and through the spring will be educating all voters about the **NEW NON-PARTISAN RACES for Metro Council and for Mayor**. This means that over 75,000 voters who are Independents or members of parties other than the Democratic or Republican parties, will be able to vote in the May 19th primary! The Jefferson County Clerk has put a FAQ chart and a list of candidates on its website that will help all new and even experienced primary voters. Go to www.elections.jeffersoncountyclerk.org and click on the two Alerts in the beige pop-up box. While there, explore the pull-down menus for a gold mine of voting information.

To help with the need for education about the primary and specific races, the League, in conjunction with neighborhood groups (such as Clifton) and other partners in Louisville, will host forums for many races.

There are also **PARTISAN PRIMARY RACES** for KY State representatives and senators and the federal election primaries for congress and the US Senate. The League plans to collaborate to have forums for those races also.

- For a list of all the **local races**, go to the Jefferson County Clerk's website: www.jeffersoncountyclerk.org/pdfs/2026-candidate-filing.pdf
- For the listing of all the **state and federal races**, go to the Kentucky Secretary of State's website www.sos.ky.gov/ and click the green bar: **2026 Primary Election Ballot Positions**

LEAGUE OF WOMEN VOTERS OF LOUISVILLE

For information about programs, committees, renting event space, and to join the League, contact LWVL office at 502-895-5218 | Email: lwvlouisville@gmail.com

Facebook: [lwvlouisville](https://www.facebook.com/lwvlouisville) | Web: lwvlouisvilleky.org

modern family
DENTISTRY
we love your smile!

3210 Frankfort Avenue
896-4532
New Patients, Emergencies,
Adults & Kids Welcome!

CRESCENT HILL ANIMAL HOSPITAL

LINDA GRIES, DVM

2265 Frankfort Ave.
Louisville, KY 40206
502.893.0063
FAX 502.893.0093
crescenthillanimalhospital.com
Fear Free Certified

SAVE THE DATE! Neighborhood Yard Sale

Saturday, April 18, 2026, 8:00 AM to Noon

The third annual Pre-Derby Purge Clifton Neighborhood Yard Sale will take place on Thunder Saturday (April 18, 2026) from 8-12. Here's your chance to get a jump on spring cleaning and ready your home for your Derby guests! If you live in Clifton and would like to have your home listed on the map of participating homes, you may sign up by clicking on the QR code and providing



your name and street address. Alternatively, you may email Lauren Pellegrino at lnp1019@gmail.com. If you don't live in Clifton, or don't have a yard (i.e. apartment/condo dwellers) ~ fear not! For a minimum \$10 donation per table, you can reserve a space in the parking lot of St. Leonard Catholic Church on Zorn Avenue to display and sell your stuff! Please email Katie Garbarino at redesquire@gmail.com to reserve a table. St. Leonard will also offer free coffee and doughnuts to vendors and shoppers. Be sure to check the QR code regularly for updates to the event page.

Frankfort Avenue Easter Parade Street Closure Notice

The 2026 Frankfort Avenue Easter Parade will be Saturday, April 4, 2026, from approximately 11:30 a.m. to 1:00 p.m. Both lanes of Frankfort Avenue will be closed to traffic from approximately 10:00 a.m. to 1:00 p.m., from Stilz Avenue to Pope Street for the safety of the participants involved.

There will be no parking on the street at that time and side streets will be closed to Frankfort Avenue as well. Police will tow any vehicles left on Frankfort Avenue. In addition, Kennedy Avenue from Grinstead to Frankfort Avenue, Crescent Court around the court, and Crescent Avenue from English to Frankfort will be closed to thru traffic during the lineup of the parade from approximately 10:00 a.m. to 11:30 a.m. "No parking, special events" signs will be posted on Friday, April 3, 2026. For alternate routes, use Grinstead Drive, Brownsboro Road, Payne Street, and side streets.

We understand what an inconvenience this may be to businesses, residents and customers and we so appreciate your patience. Please invite your friends, family, and customers to watch and/or participate in this fabulous annual community event! While you are on The Avenue, please support our wonderful local businesses. For questions or concerns, please contact Easter Parade Coordinator Scott Endres at 502-420-8584.



LIST WITH MICHAELLE WARNER
michaelle.warner1@gmail.com

WALTON JONES
REALTORS, INC.

United Crescent Hill Ministries Programs & Events

150 State St. | 502-893-0346 | www.uchmlouky.org



Summer Camp Information Coming Soon!

Be on the lookout for upcoming details about UCHM's Summer Camp program! We're finalizing plans now and expect to share full details by mid-March, including dates, registration, and program highlights. We can't wait to offer another fun and engaging summer for your child!

Volunteer Opportunities at UCHM

Looking for a way to give back? UCHM has several volunteer opportunities available, including supporting our Food Pantry, After-School Program, and 60+ Program. Whether you can help weekly or just once in a while, your time makes a meaningful difference in our community. Join us in making a positive impact!

Join Our 60+ Program

Our 60+ Program offers a welcoming space for older adults to connect, have fun, and enjoy great activities! Participants can look forward to bingo, hot meals, special music guests, and monthly celebrations. It's a wonderful way to stay active, socialize, and be part of a vibrant community. Tuesdays and Thursdays at UCHM, we'd love to see you there!



LARGE ITEM PICKUP

Large Item Pickup by appointment is available in the Urban Services District. Quickly get rid of up to four large items, once per week, by

simply making an appointment! This means plenty of opportunities to dispose of large items and improved neighborhood cleanliness!

Go to louisvilleky.gov/government/public-works/services/junk-and-bulk-trash-disposal for more details and instructions on how to make an appointment. Acceptable items are: furniture, household items, metal items, and select appliances.

The Clifton Community Council is a nonprofit 501c3 organization and is prohibited from endorsing political candidates.

Mark England for Louisville Metro Council

A Steady,
Practical Leader
for District 9.



EnglandForMetro9.com

MARK
ENGLAND
METRO COUNCIL

Paid for by
England for Metro 9



BLUE CANARY
Counseling, LLC

Matt Currin, MS, MEd, LPCA, KCCRT

(502) 890-9817



502-365-4054

1812 Brownsboro Rd
Louisville, KY 40206

One Cup...A Billion Smiles

By Sam Cowan, Clifton Quarterly Volunteer

Where can you go in Clifton to get a cup of coffee that represents connection, warmth, and community...all while sharing a moment of joy that billions of people enjoy every day around the world?

According to Kal Karim, owner of Billion Cup Coffee on the corner of William and Brownsboro (1812 Brownsboro Road), Billion Cup Coffee seeks to serve coffee enthusiasts with high-quality coffee within a warm, respectful environment.

"We treat everyone like family at Billion Cup," stated Karim. "Consistency, cleanliness, and hospitality are our top priorities! Clifton is a diverse community and a vibrant neighborhood where many people enjoy supporting small businesses and authentic experiences."

Karim opened Billion Cup Coffee just a handful of months ago on lower Brownsboro Road. He has over ten years of industry experience in both the United States and overseas in places such as Jordan. If you have never been to Billion Cup, you will be met with a modern community space with several different cozy seating arrangements that promote connection.

Billion Cup specializes in premium coffee, signature drinks, fresh pastries, homemade desserts, specialty lattes, and Yemeni-inspired flavors. With a motto of 'Good Coffee, Good People, Good Vibes' that steers the atmosphere at Billion Cup, Karim believes that his coffee shop is designed to be more than just a cafe.

"Expanding the menu, introducing additional seasonal specialty drinks, continuous improving of the space, and building deeper roots in the Clifton area are main goals for the future of Billion Cup Coffee," positioned Karim.

New drinks and desserts are constantly being added to the menu with occasional promotions and community events. Large windows and plenty of light make this coffee shop bright so that one can watch a day and the seasons unfold along the connected streets.

Billion Cup Coffee is open seven days per week from 8:00 AM until 7:00 PM...and closes later on Fridays, Saturdays, and Sundays. Their phone number is 502-365-4054.

According to one customer on YELP, Billion Cup Coffee has Halal food, a knowledgeable and kind owner... and a lemon meringue pie that is beyond delicious.

"It's not too crowded, full of lovely plants, and has comfortable furniture, said the YELP customer.

YOUR LOCAL ROOFING EXPERTS!

GRADUATE 
CONTRACTING

1-800-42-ROOFS



Complimentary Inspections & Estimates



COMMERCIAL & RESIDENTIAL

American Printing House for the Blind The DOT Experience Museum

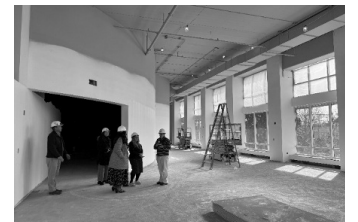
Construction at The Dot Experience is coming into focus, and the excitement is building. As the exterior takes its final shape, the real transformation is happening inside. With drywall up, windows installed, and lighting plans underway, the space is beginning to feel like the immersive destination that will welcome guests in October.

At the heart of it all is the gallery. Sweeping walls and dramatic floor-to-ceiling windows are bringing long-awaited renderings to life, offering an early glimpse of the exhibits that will soon fill the space. With just nine months to go until opening day, the vision is no longer just imagined; it is becoming reality.

The Dot Experience is an innovative museum that blends the energy of an attraction, the insight of a factory tour, and the purpose of an educational center. As a destination experience, our mission is to change perspectives about blindness, inspire people to act in their own ways, and make the world more welcoming for everyone, while leading the way as a model of museum inclusivity.



Want a preview of the people and stories The Dot Experience will spotlight? Watch the recent Spectrum News 1 feature highlighting Danielle Burton, Communications Accessibility Editor, and Lisa Echsner, Senior Director of Advancement Initiatives.



M^{Mary Lou} Marzian

DEMOCRAT STATE REPRESENTATIVE

I'M STANDING STRONG FOR OUR CLIFTON NEIGHBORHOOD AND
OUR 41ST DISTRICT. PLEASE REACH OUT WITH ANY LEGISLATIVE
INPUT, ADVICE, OR IF
I CAN BE OF ANY HELP TO YOU.

(502) 564-8100
MARYLOU.MARZIAN@KYLEGSLATURE.GOV

STANDING STRONG FOR US!

PAID FOR MY MARY LOU MARZIAN FOR STATE REPRESENTATIVE



Beyond the Refresh: See Chatsworth Park's Complete Overhaul



Tired of apartment renovations that only scratch the surface? We are redefining modern living with an overhaul that leaves no detail untouched. Whether you seek a spacious one bedroom or two bedroom, we are delivering a complete transformation for all homes!

These newly renovated apartment homes offer a fresh, contemporary living experience, featuring completely updated kitchens with stainless steel appliances, stunning new countertops, modern faucets, and updated sinks, complemented by the addition of a microwave in every unit to maximize counter space and provide quick cooking solutions.



**Call to ask about
our specials!**

Call: 502-895-1677. Mon-Thu: 9 am-5pm. Fri: 9 am-2pm.
Apply online: chatsworthparkapts.prospectportal.com
Visit: 122 N. Peterson Ave. 40206. Frankfort & Ewing

Nestled in the Crescent Hill neighborhood Chatsworth is a pedestrian friendly community close to Frankfort Ave. restaurants, bars, boutiques, and historical buildings and minutes away from St. Matthews. The greenscapes and lush landscaping make this a desirable place to call home.

Growing a Career in Senior Care at Nazareth Home

When Ashley Cochran first walked into Sacred Heart Village’s kitchen at just 16 years old, she never imagined she would one day lead the very same community—now known as Nazareth Home Clifton. “I started when I was 16, working in the kitchen as a food service assistant,” Ashley recalled. “My initial plan was to become a nurse. I just wanted to get my foot in the door of healthcare.”

That first job opened more doors than she could have imagined. After High school, Ashley obtained her CNA, and began attending Western Kentucky University. She drove home to Louisville every weekend to work in the dietary or nursing department.

“Looking back, it was kind of crazy,” she laughed. One weekend, a chance encounter with the CFO changed everything. “He asked if I’d be interested in a summer internship in the business office,” Ashley said. “Of course, I wanted to gain more experience—and it ended up changing my entire career path.” Ashley shifted her focus from nursing to business, ultimately earning her degree in Business Administration and later her MBA. She grew her career in admissions and management before briefly stepping away to the for-profit side of healthcare.

Shortly after Nazareth Home acquired Sacred Heart in 2016, Ashley felt called back. “I always knew Nazareth Home was the very best and I aspired to work here one day,” she said. She returned as a hospital liaison, later pitching the idea of a hybrid “administrator-in-training” role to the CEO—a move that set the stage for her next chapter.

In April 2023, Ashley became a licensed nursing facility administrator. Today, she leads Nazareth Home Clifton—the same community where she started as a teenager washing dishes.

Nazareth Home Clifton is a 113 bed licensed nursing facility with a 25 unit Independent Living community in the Clifton Neighborhood.



RSI
RUEFF SIGNS

1530 E. Washington St.
Louisville, KY 40206
O: 502.582.1714
F: 502.584.6427

Find Your Voice at LOUISVILLE FOLK SCHOOL

You don’t have to live in Clifton to take lessons at the Folk School, but lucky for you, we’re just down the street!



225 N Clifton Ave, Suite 4, Louisville, KY 40206

Louisville Folk School is where music and community come together. For kids picking up their first instrument and adults ready to try something new, we offer classes and lessons that make learning fun and inspiring. Each year, more than **5,000 people** connect, heal, and grow through our programs.

**Group Music Classes • Private Lessons
Workshops • Summer Camps • Jams
Public Performances**

What we teach:

- Guitar, mandolin, banjo, fiddle, ukulele, dulcimer, piano, bass, voice
- West African drums and xylophone
- Songwriting and music theory
- Bluegrass, old-time, jug band ensembles

Group classes are available for teens and adults.
Private lessons for all ages.



Volunteer to Serve on the Clifton Architectural Review Committee (ARC)

If you live in Clifton or own property in Clifton and are either a (1) architect, (2) real estate professional (Realtor, Broker, home/building inspector, builder, licensed contractor, structural engineer), (3) owner of an income producing property, or (4) a resident, please consider volunteering to serve on the Clifton ARC. ARC members are appointed by the Landmarks Commission, affirmed by Metro Council, and serve a 3 year term. Meetings are scheduled at 4:30 pm or 5:30 pm on the 2nd or 4th Wednesday of the month and held in the 1st floor conference room at 444 S. 5th St. On average the Clifton ARC meets 5 times a year and hears 10 cases. To volunteer please fill out the application form <https://louisvilleky.gov/government/office-planning/architectural-review-committees>. If you have questions, please contact Savannah Darr, Historic Preservation Officer, Savannah.Darr@louisvilleky.gov.

Have Your Taxes Prepared for FREE by IRS Certified Volunteers

Have your taxes prepared for FREE by IRS certified volunteers
The Louisville Asset Building Coalition (502-574-5687) is providing Free Tax Preparation Services at United Crescent Hill Ministries, 150 State St., Mon. & Wed., 9 am – 3 pm, until April 15, 2026. Appointments are preferred.

Call: 502-305-0005. Visit: www.labcservices.org. OR use the QR code. What to bring:

- Social Security Cards for you, your spouse and/or dependents or social security number verification letter
- Government issued photo identification for you and your spouse
- Form W-2, W-2G, or 1099-R from all employers
- Interest and dividend statements from banks (Form 1099)
- Daycare expenses with the providers' EIN and amount paid (if applicable)
- Bank routing numbers and account numbers for direct deposit or a blank check
- A copy of last year's tax return if available
- Any other relevant information about income and expenses
- Health insurance documents: 1095A, 1095B, or 1095C. If you qualify for an exemption through the Health Insurance Marketplace, bring the Exemption Certificate Number (ECN).



For questions visit labcservices.org or call 502-574-5687 to make an appointment. For more info follow us on Facebook: Louisville Asset Building Coalition or IG @LABC_502. For questions about tax preparation at UCHM, call 502-627-0510.

MSD's Emergency Wastewater Rate Assistance Program

MSD's Emergency Wastewater Rate Assistance Program (EWRAP) provides a 30 % discount for qualifying income-eligible customers. The discount applies to wastewater service charges, wastewater volume charges and consent decree surcharges on the MSD portion of your bill. To qualify, you must be a MSD residential wastewater customer and at or below 175 % of the poverty line. (1 person: \$27,388 yr, 2 people: \$37,013 yr, 3 people: \$46,638 yr, 4 people: \$56,263 yr) To apply online, visit:

louisvillemad.org/ewrap. If you prefer to speak with a live agent, contact MSD Customer Relations at 502-540-6000. For LIHEAP participants call 502-991-8391 to schedule an appointment so you may apply for the EWRAP. MSD also offers a Senior Discount Program, which provides a 30 % discount for those over the age of 65 who have an annual household income below \$40,000. The Senior Discount Program is not available to those enrolled in EWRAP.



Kathy's Shoppe

107 S. EWING AVENUE
LOUISVILLE, KY 40206
502.245.8222
KATHYSSHOPPE.COM

MONDAY - SATURDAY
11 AM - 6 PM

 Across the street from Walgreens, next to Bare3



BLACKBURN and DAVIS, Inc.
Since 1914

AIR CONDITIONING

2222 FRANKFORT AVENUE
Vice President
Daniel Henley
blackburnanddavis1914@gmail.com

PHONE 893-5524
FAX 893-8155
President
Jeremy Huffman

CLIFTON COMMUNITY COUNCIL

OCTOBER 2025 — SEPTEMBER 2026

BOARD OF DIRECTORS		
President — Mike O'Leary	502-744-3144	michael.oleary@twc.com
Vice President — Bill Lieshoff	502-552-8812	blieshoff@gmail.com
Secretary — Lauren Pellegrino	813-503-0357	lnp1019@gmail.com
Treasurer — Pam Vetter	502-594-9888	pamavetter@gmail.com
Member — Emily Boone	502-585-3430	emilyboone@aol.com
Member — Bill Wright	502-893-0879	bww0912@gmail.com
Member — Phil Samuel	502-587-0892	billygoathill3@gmail.com
Member — Katie Garbarino	502-494-9890	Redesquire@gmail.com
Member — Margaret Battcher	502-458-4487	margaret.w.battcher@gmail.com
Member — Joey Couch	606-216-8033	joey40206@gmail.com
Member — Vacant		

COMMITTEE CHAIRS	
Beautification	Pam Vetter
Land Use & Preservation	Mike O'Leary
Membership	Pam Vetter, Jan Weber
Pedestrian & Bike Access	Bill Wright, Mike O'Leary
Special Events	Lauren Pellegrino, Katie Garbarino
Newsletter	Phil Samuel

THE CLIFTON QUARTERLY

Since 1987, the Clifton Quarterly is a newsletter produced by the Clifton Community Council each March, June, September and November and is distributed to over 2000 residents and businesses within the area by more than 30 of your neighbors who volunteer to deliver the newsletter to your door.

ADVERTISING RATES		
	PER ISSUE	ANNUAL RATE
Business Card	\$60	\$216
Quarter Page	\$100	\$360
Half Page	\$195	\$720

Annual rates reflect a 10% discount for pre-paying in advance for a year or 4 issues

2026 CLIFTON QUARTERLY DEADLINE DATES	
Spring	Feb 12
Summer	May 14
Fall	Aug 13
Winter	Oct 15

<https://www.cliftonlouky.org/advertise.html#/>

NEWSLETTER VOLUNTEERS	
Volunteers & Distribution	Phil Samuel
Accounting	Pam Vetter
Graphic Designers	Jay Todd Richey, Elijah Essa

Clifton is a Preservation District

Prior approval by Louisville Metro Landmarks is required before new construction or changes to exterior: doors, windows, siding, additions, porches, storefront, garages, fences, hand rails, roofs, chimneys, solar panels, retaining walls, shutters, sidewalks, driveways, decks, patios, signs, tree removal, limestone curbs/walls, brick alleys/streets, any demolition, or any other exterior change.

The Landmarks staff are available to assist you and answer any questions you may have by calling 502-574-6230. You may complete and submit an Application for a Certificate of Appropriateness (COA) online at: <https://louisvilleky.gov/government/planning-design/historic-preservation-urban-design>.



CLIFTON COMMUNITY COUNCIL

MEMBERSHIP APPLICATION

\$10 PER PERSON/YEAR

Name _____

Address _____

Email _____

Phone _____

New Renewal Date _____

Indicate if you would like to serve on a committee:

- Beautification
- Membership
- Newsletter
- Land Use & Preservation
- Pedestrian & Bike Access
- Special Events

Make checks payable to Clifton Community Council
Mail to: Pam Vetter, 313 Crescent Spring Dr, Louisville, KY 40206

Or pay with a debit or credit card at: www.cliftonlouky.org.

Online payments include a 2.9% processing fee and a 30 cent transaction fee for a total of \$10.61.

CONTACT YOUR LOCAL GOVERNMENT

LOUISVILLEKY.GOV

- 311 Metro Call (574-5000) to ask a question, request a service, register a complaint, offer a suggestion
- 211 Social service referral help line
- 911 Police, Fire, EMS, emergency
- 811 Call before you dig
- 988 Suicide and Crisis Lifeline
- 574-7111 Metro Police, non-emergency
- 574-7636 Metro Police, 5th Division
- 574-3321 Building Codes and Regulations
- 574-6230 Planning Commission
- 574-6230 Landmarks Commission

The Clifton neighborhood boundaries are: Brownsboro Rd on the north, Ewing Ave on the east, I-64 on the south, and Mellwood Ave on the west.

CUNNINGHAM

Don't Compromise, Choose Cunningham!

DOOR & WINDOW®

Historic, Architecturally Accurate
New Construction and
Replacement, Wood,
Aluminum Clad Wood and
Vinyl Windows

Wood, Fiberglass and Steel
Entry Doors, also Patio Doors

Composite Trim That Looks
Like Wood But NEVER Rots

Beautiful Garage Doors and
Openers

Custom and Standard Sized
Storm Windows and Doors



"Don't Compromise, Choose Cunningham!"

**2133 FRANKFORT AVENUE
@THE RAILROAD TRACKS
897-5700**

**info@cunninghamdoor.com
www.cunninghamdoor.com**



Home to What Matters Most



Discover the perfect place for a fresh start
at Nazareth Home. Our **newly-renovated
independent living apartments** are ready
to welcome you.

Call now to schedule a tour!

(502) 532-2490

NAZARETH
HOME

Nazareth Home Clifton Campus
2120 Payne St. | Louisville, KY 40206 | NazHome.org

FREE ESTIMATES!

CertaPro Painters®



RESIDENTIAL. COMMERCIAL. INTERIOR. EXTERIOR.



**2218 Frankfort Ave
502-290-6636**

www.certapro.com/louisville-metro/

MENTION THIS AD FOR 10% OFF YOUR NEXT PROJECT.

Opening minds in October 2026.

The world's most
inclusive museum,
right next door!

The **Dot** ::
Experience ::
AMERICAN PRINTING HOUSE



Learn more at TheDotExperience.org